



INNOVATIVE
HIGH DEFINITION SURVEILLANCE

OMNI Tools
For use with all **OMNI Series**
Recorders and IP Cameras

Installation Guide

Thank you for purchasing our products. If there is any question or request, please do not hesitate to contact your dealer. KT&C Certified Dealers can contact KT&C directly.

This manual is applicable to the installation of the OMNI Tools software suite.

While KT&C makes every effort to ensure the completeness and accuracy of the information contained in this Guide, we are not responsible for typographical errors or misprints. At the same time, KT&C reserves the right to make changes to improve the performance of our products at any time without notice, and so the specifications and content of this document are subject to change without notice. Every effort will be made to include corrections and updates in new versions of this manual and/or online.

Contents

Chapter 1 Introduction	2
1.1 Overview	2
1.2 System Requirements	2
1.3 Conventions	2
1.4 Installation	3

Chapter 1 Introduction

1.1 Overview

OMNI Tools is a suite of programs and utilities that are useful for the planning and configuration of various OMNI Series IP cameras and recorders/NVRs. These programs include:

Program Name	Description
OMNI Utility	Search/discover/display/configure IP settings for devices connected on the LAN
OMNI IP Planner	Size IP systems: NVRs needed for total camera bandwidth; or average camera bandwidth based on total NVR capacity
OMNI Drivespace	Estimate record capacity (time) vs. disk space based on total streaming bandwidth
OMNI Bandwidth	Estimate total network capacity needed to view/record/play from all streaming devices on a segment
OMNI Focus	Focusing aid for network and networked DVR/NVR attached cameras
OMNI Upgrade	Load firmware to one or to several selected LAN attached devices
OMNI Backup	Automatic/manual network copy of files from recorder HDDs and IPC SD cards to other locations

1.2 System Requirements

Operating System: Microsoft Windows 7 / Windows 2008 32 / 64-bit; Windows XP / Windows 2003 32-bit

CPU: Intel Pentium IV @ 3.0 GHz or above

RAM: 1G or above

Video Card: RADEON X700 Series

Display: 1024*768 resolution or above

1.3 Conventions

In order to simplify the description, we refer to the “OMNI Tools” program as “software” in the following chapters.

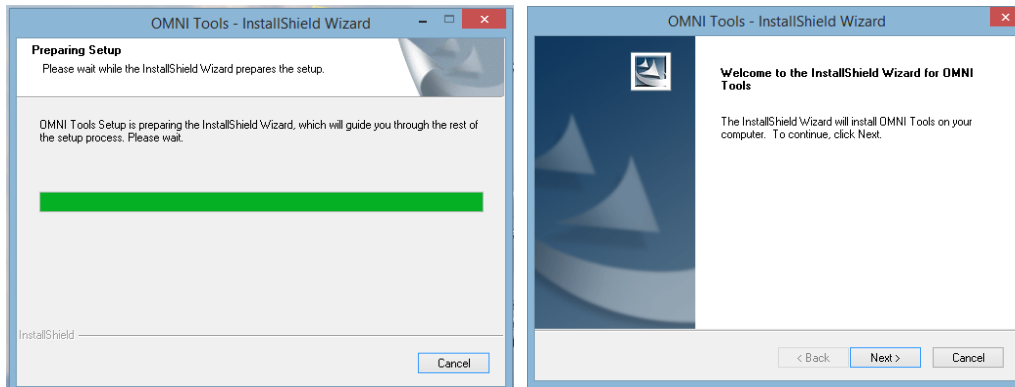
1.4 Installation

The OMNI Tools suite includes both the OMNI Tools top level “menu” of sub-program choices, and also a program/utility called WinPcap that is necessary to the operation of various aspects of the different OMNI Tools. During the installation you must install both the OMNI Tools programs and WinPcap.

From the CD included with the OMNI hardware, or after downloading from the KT&C website, run the OMNI Tools.exe.

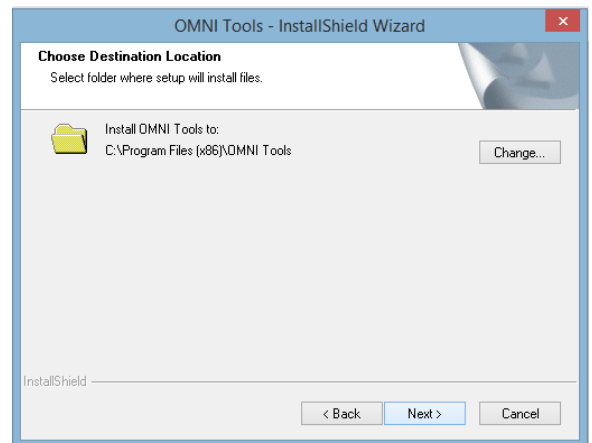
<input type="checkbox"/>	Name	Date modified	Type	Size
<input type="checkbox"/>	OMNI Tools.exe	1/28/2015 9:28 AM	Application	49,596 KB

This will bring up a series of windows which control the installation process:

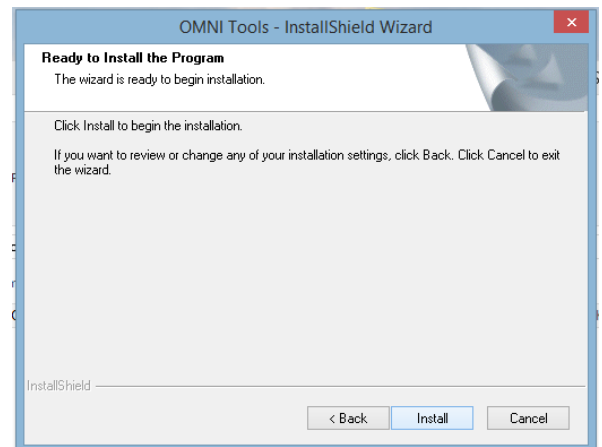


Click “Next” to proceed.

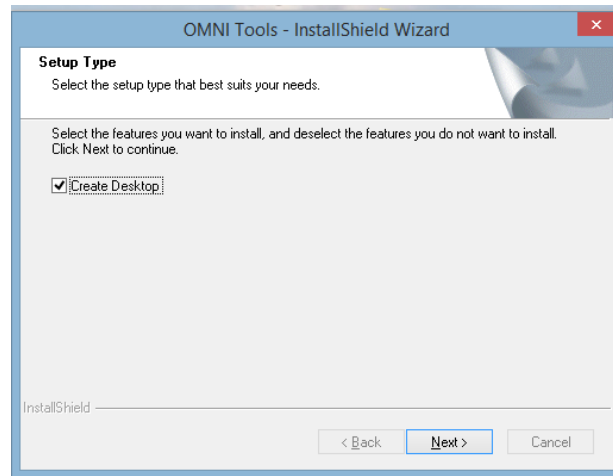
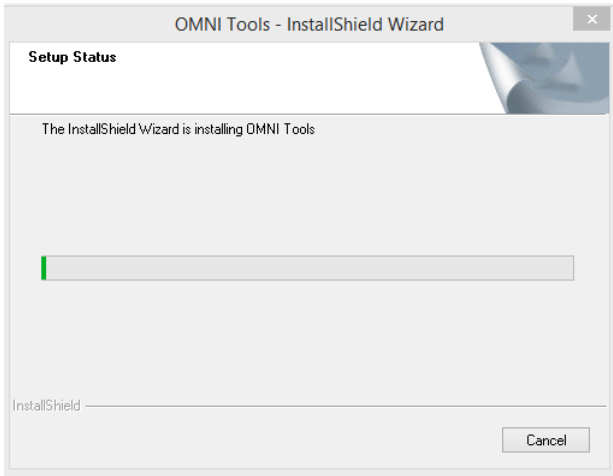
You can accept the default installation folder or install the OMNI Tools in the folder of your choice. Click “Next” to proceed.



If you are ready to begin the actual installation click “Install”.

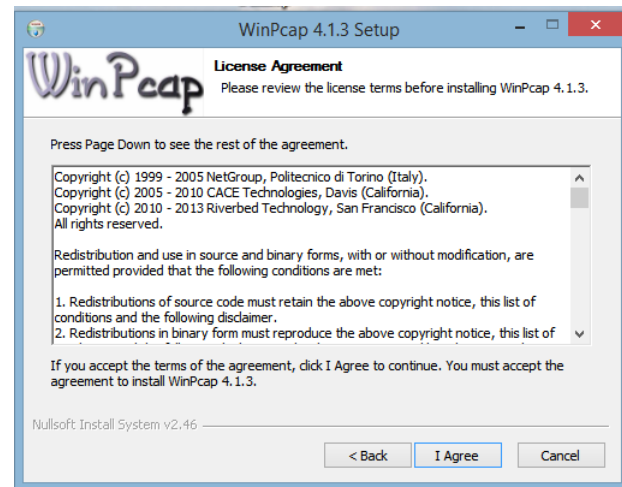
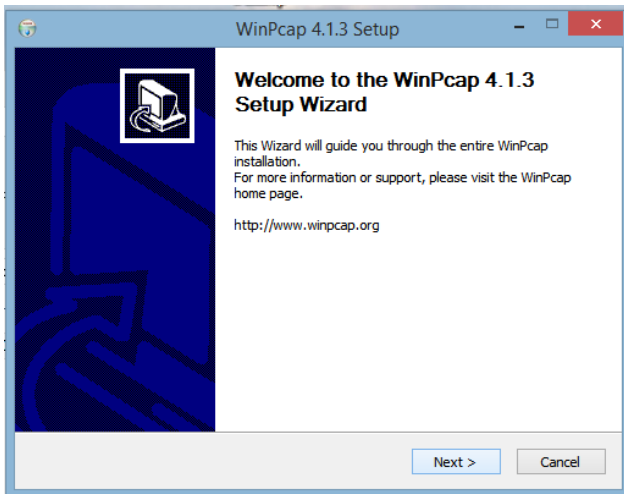


The installation will proceed

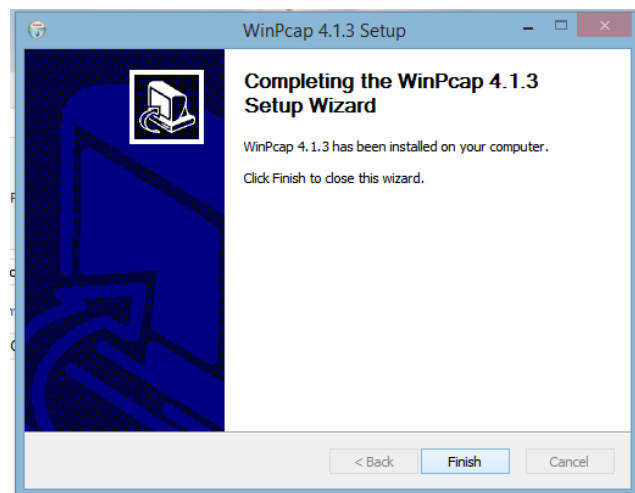
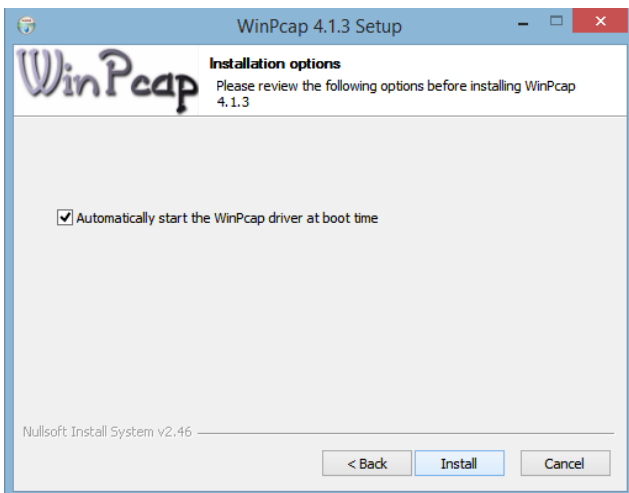


Leave the box checked if you wish the installer to create a shortcut icon on the desktop and click “Next”.

At this point, WinPcap will be installed



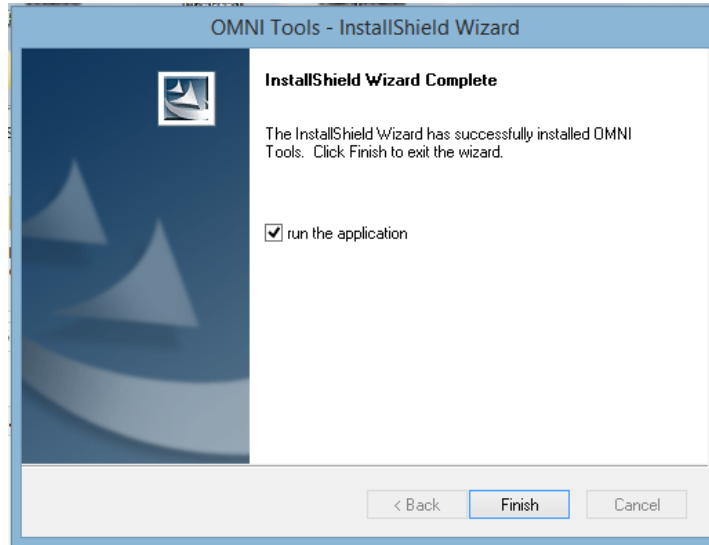
Click “I Agree” and “Next”.



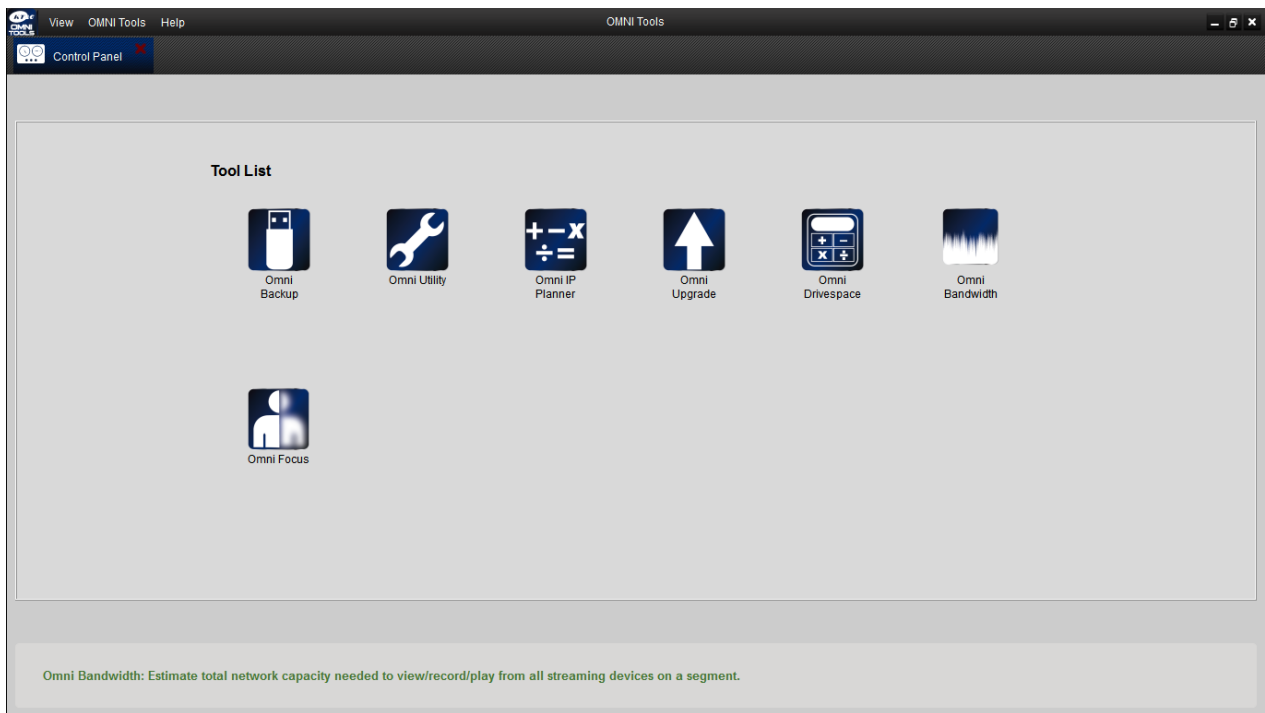
Since WinPcap is necessary for proper operation of many of the OMNI Tools sub-programs you are advised to start WinPcap at boot time. Click “Install” and “Finish” If no longer needed, the startup of the WinPcap driver can be changed at a later time.

OMNI Tools Software Suite installation Guide

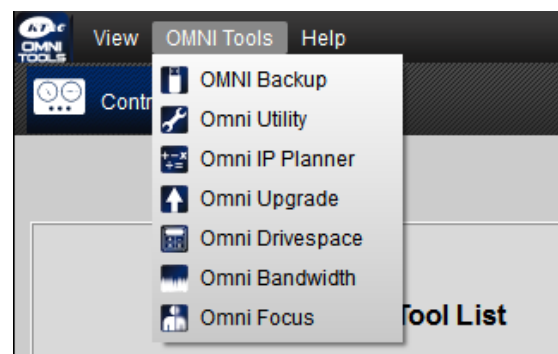
At this point the installation should be complete. You have the option to run OMNI Tools at this point if desired.



This is the OMNI Tools main Control Panel screen. Mouse over the icon for a tool to see a brief overview of its function.

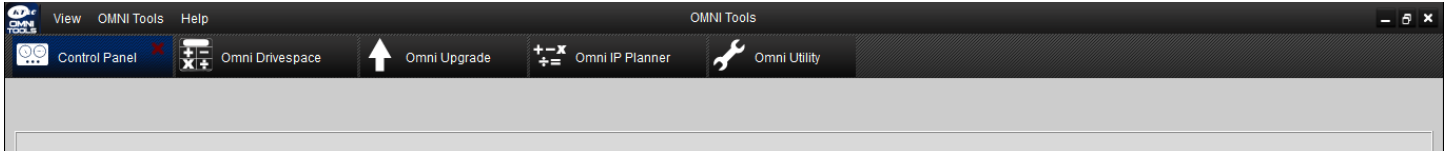


You may launch any tool by clicking on its icon, or choose it from the drop down menu.



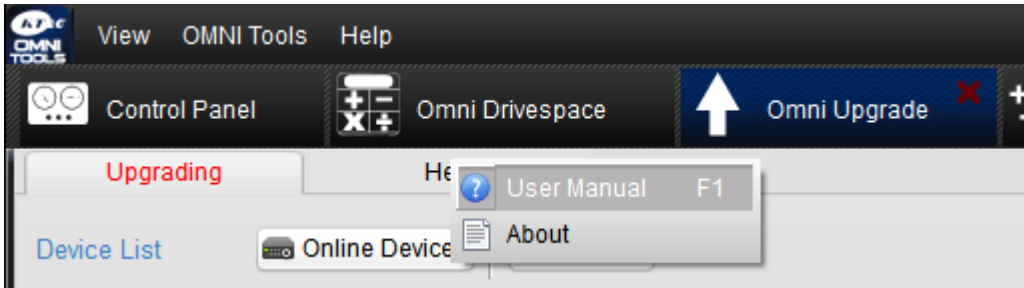
OMNI Tools Software Suite installation Guide

Multiple Tools can be active at the same time. Active tools will display as tabs in on the top bar



Click on a tab in the bar to switch between tools.

There is a separate User Guide for each tool. Within each tool, click “Help” then “User Manual” or press “F1” to bring up the PDF of the manual for that tool.



User Guides can also be downloaded from www.ktncusa.com

KT&C America
www.ktncusa.com

New Jersey Office
40 Lane Road 1st Floor
Fairfield, NJ 07004
T: 973 276 0118
F: 973 276 0 116

New York Office
200 Pkwy Drive South Suite 200
Hauppauge, NY 11788
T: 631 864 0118
F: 631 864 0116

California Office
3240 Wilshire Blvd Suite 501
Los Angeles, CA 90010
T: 213 381 0061
F: 213 381 0064