

Firmware Upgrade

Run "NetCamIPInstaller.exe"



NetCamIPInstaller
NetCamIPInstaller MFC Applic...

No	Product	Host Name	Serial No.	IP Address	MAC Address	Firmware Ver.
1	KNC-VNi120HD	KNC-VNi120HD	T2002397	192.168.1.113	00:15:DC:00:09:5D	KNC-VNi120HD.1.2.1

Refresh Device List

Authenticate:
ID: admin
Password: XXXXXX

By pressing "Refresh Device List", IP installer will automatically detect locally connected IP camera and/or device.

Insert ID and password of the IP camera (Default ID/ password: admin/admin).

- ① **Product** - Model name of the camera attached on the network.
- ② **Host Name** - Label assigned to a device connected to a network and used to identify the device in various forms of electronic communication.
- ③ **Serial No.** - Unique code assigned for identification of a single unit.
- ④ **IP Address** - Numerical label assigned to a device participating in a network that uses the Internet Protocol for communication.
- ⑤ **MAC Address** - Unique identifier assigned to network interfaces for communications on the physical network segment.
- ⑥ **Firmware Ver.** - Version number of memory and program code and data stored.

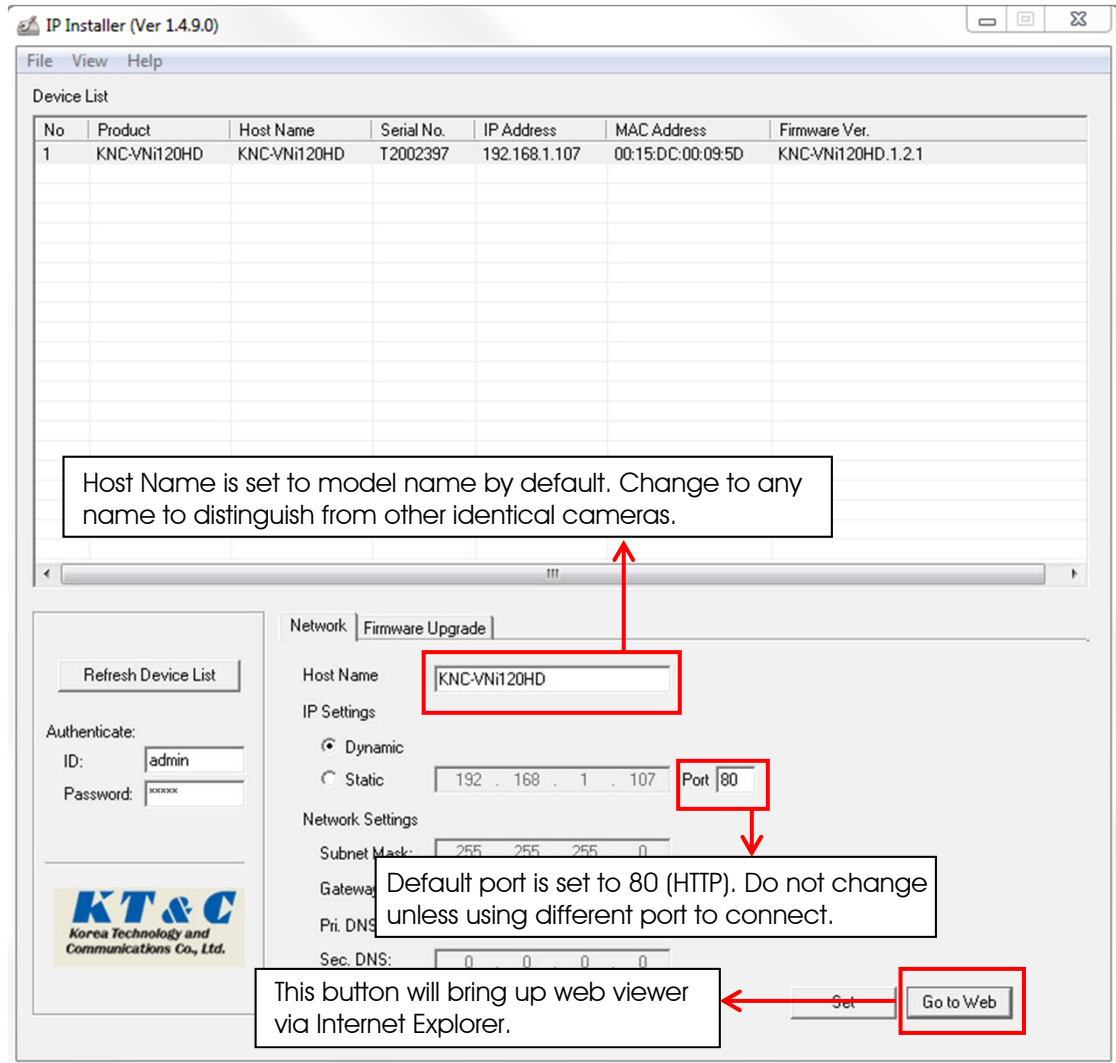
KT&C America, Inc.
www.ktncusa.com

New Jersey Office
40 Lane Road 1st Floor
Fairfield, NJ 07004
T: 973 276 0118
F: 973 276 0 116

New York Office
200 Pkwy Drive South Suite 200
Hauppauge, NY 11788
T: 631 864 0118
F: 631 864 0116

California Office
3240 Wilshire Blvd Suite 501
Los Angeles, CA 90010
T: 213 381 0061
F: 213 381 0064

Dynamic IP Setting



IP Installer (Ver 1.4.9.0)

File View Help

Device List

No	Product	Host Name	Serial No.	IP Address	MAC Address	Firmware Ver.
1	KNC-VNi120HD	KNC-VNi120HD	T2002397	192.168.1.107	00:15:DC:00:09:5D	KNC-VNi120HD.1.2.1

Host Name is set to model name by default. Change to any name to distinguish from other identical cameras.

Network Firmware Upgrade

Host Name: KNC-VNi120HD

IP Settings

Dynamic

Static: 192 . 168 . 1 . 107 Port 80

Network Settings

Subnet Mask: 255 . 255 . 255 . 0

Gateway:

Pri. DNS:

Sec. DNS:

Default port is set to 80 (HTTP). Do not change unless using different port to connect.

This button will bring up web viewer via Internet Explorer.

Go to Web

Dynamic IP - The IP address will be set by the **DHCP** server.

****DHCP** - network protocol that is used to configure network devices so that they can communicate on an IP network. A DHCP client uses the DHCP protocol to acquire configuration information, such as an IP address, a default route and one or more DNS server addresses from a DHCP server.

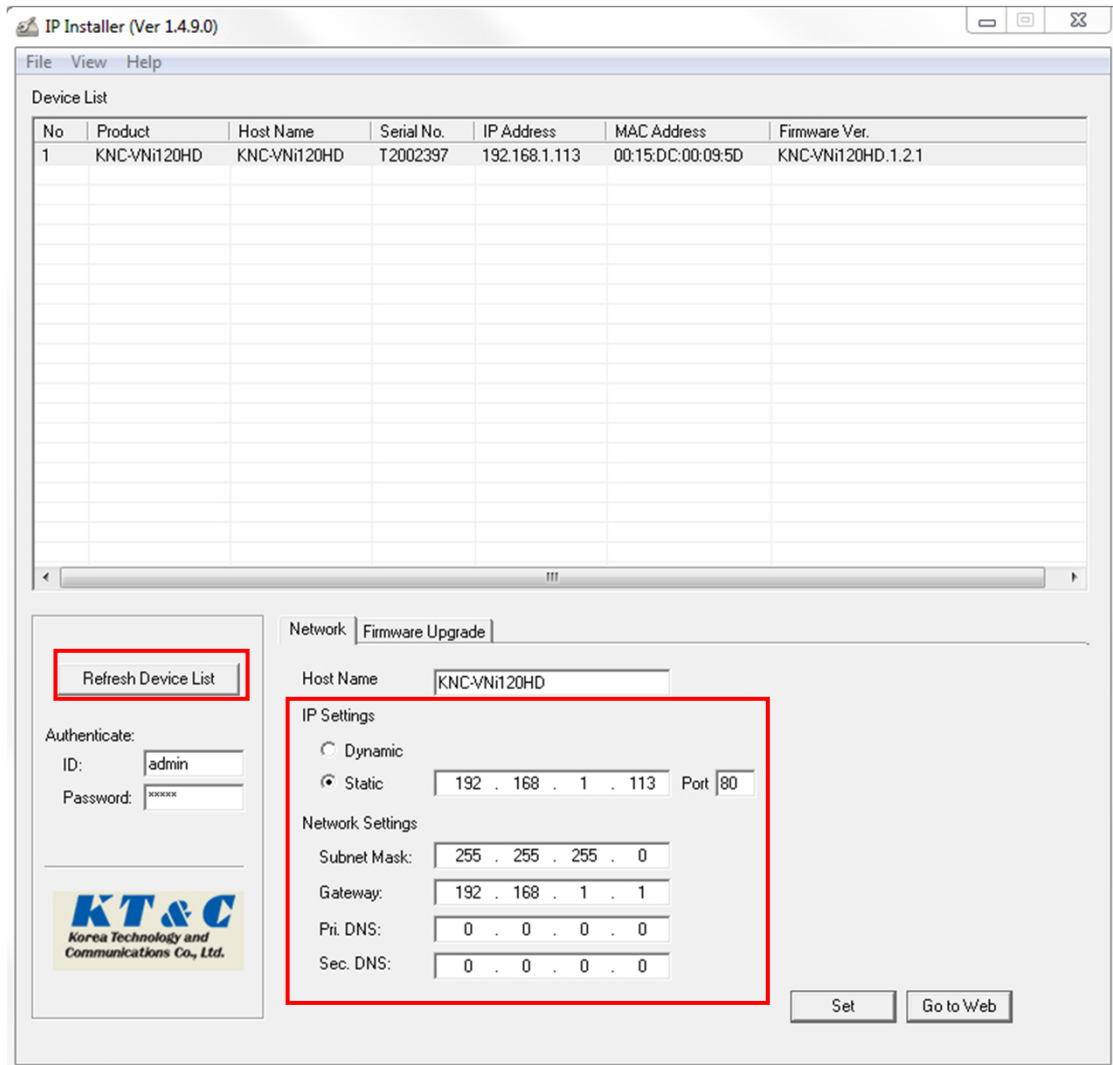
KT&C America, Inc.
www.ktncusa.com

New Jersey Office
40 Lane Road 1st Floor
Fairfield, NJ 07004
T: 973 276 0118
F: 973 276 0116

New York Office
200 Pkwy Drive South Suite 200
Hauppauge, NY 11788
T: 631 864 0118
F: 631 864 0116

California Office
3240 Wilshire Blvd Suite 501
Los Angeles, CA 90010
T: 213 381 0061
F: 213 381 0064

Static IP Setting



Static IP - Static IP is used when stable/unchanging IP address is required (Dynamic IP address seldom changes its IP address). Moreover, it is more reliable when viewing network cameras remotely outside of local network.

To set static IP:

- ① Check Static option button is selected. (Default on all of KT&C product)
- ② Acquire static IP information from ISP (Internet Service Provider) or network administrator.
- ③ Input the following: IP Address, Subnet Mask, Gateway, Primary DNS, Secondary DNS.
- ④ Press "Set".

****Press "Refresh Device List" to display changed IP address.**

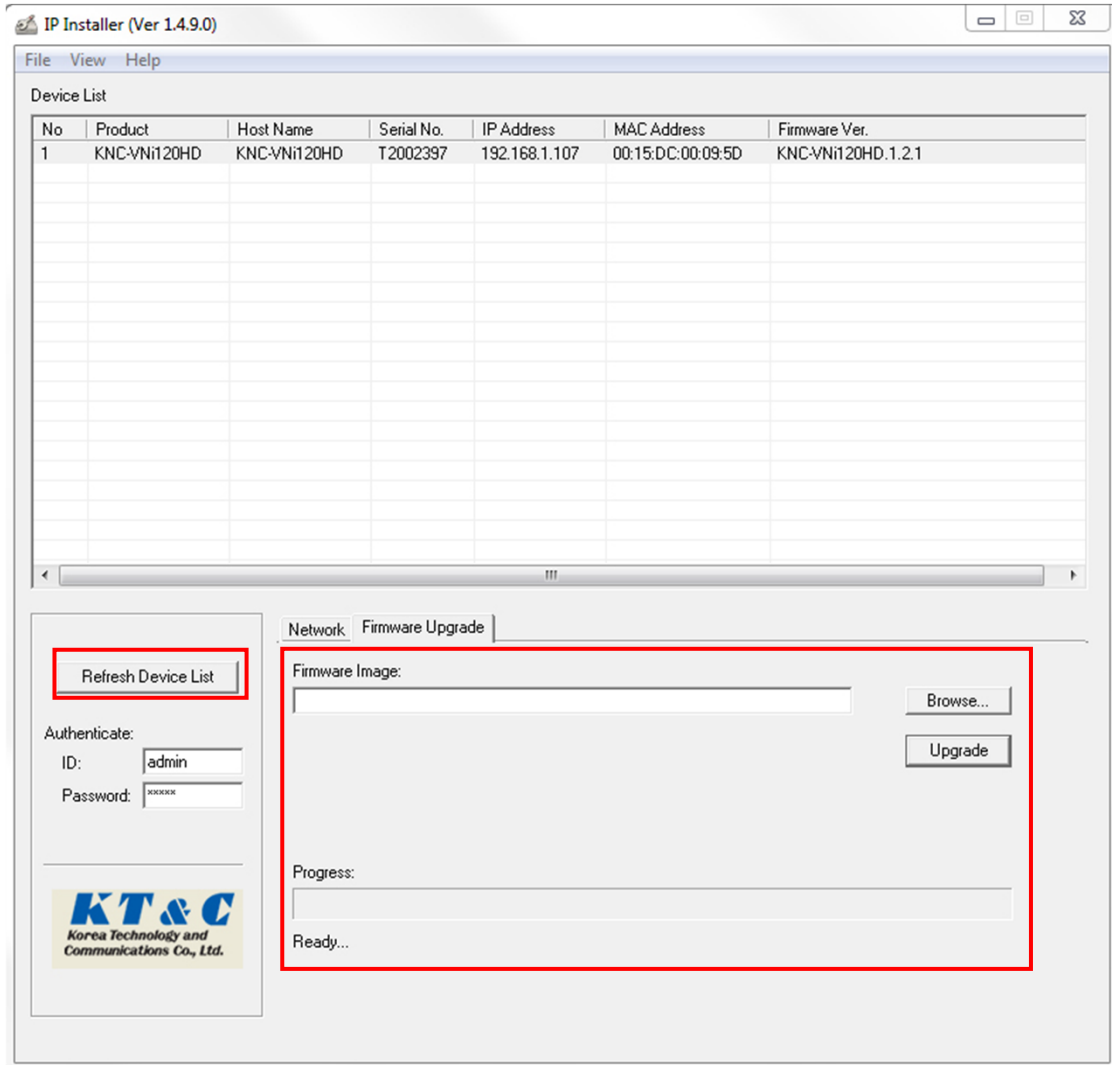
KT&C America, Inc.
www.ktncusa.com

New Jersey Office
40 Lane Road 1st Floor
Fairfield, NJ 07004
T: 973 276 0118
F: 973 276 0116

New York Office
200 Pkwy Drive South Suite 200
Hauppauge, NY 11788
T: 631 864 0118
F: 631 864 0116

California Office
3240 Wilshire Blvd Suite 501
Los Angeles, CA 90010
T: 213 381 0061
F: 213 381 0064

Firmware Upgrade



To upgrade firmware:

- ① Latest firmware can be downloaded from www.ktncusa.com
- ② Browse to select downloaded firmware.
- ③ Press Upgrade.
- ④ Wait till "Update completed" message prompts.

****Press "Refresh Device List" to display updated firmware version.**

KT&C America, Inc.
www.ktncusa.com

New Jersey Office
40 Lane Road 1st Floor
Fairfield, NJ 07004
T: 973 276 0118
F: 973 276 0116

New York Office
200 Pkwy Drive South Suite 200
Hauppauge, NY 11788
T: 631 864 0118
F: 631 864 0116

California Office
3240 Wilshire Blvd Suite 501
Los Angeles, CA 90010
T: 213 381 0061
F: 213 381 0064