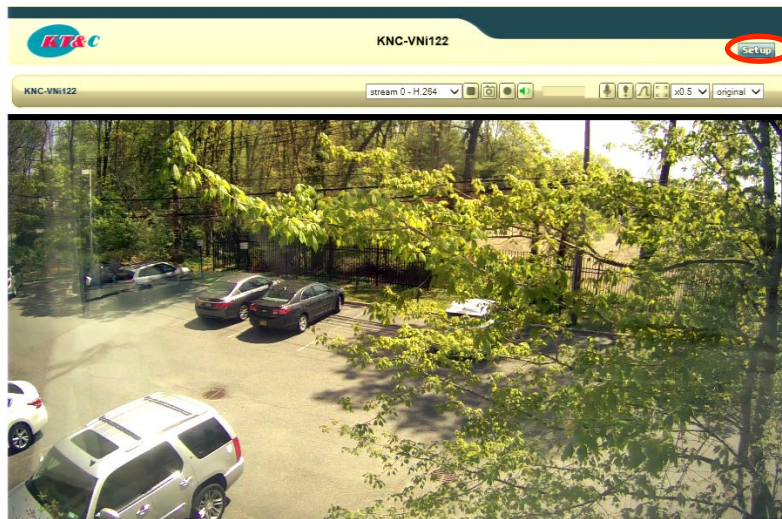
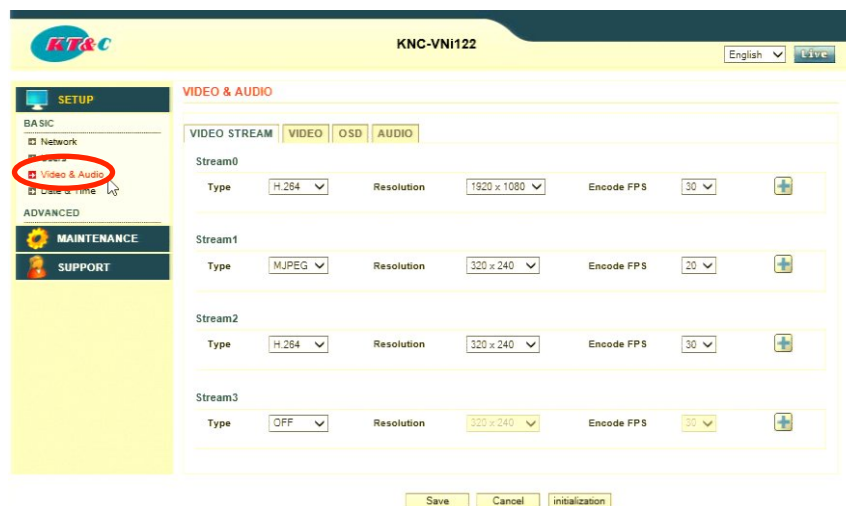


Configuring the KNC-p2DR28V12IR with OMNI Plug N Play NVRs

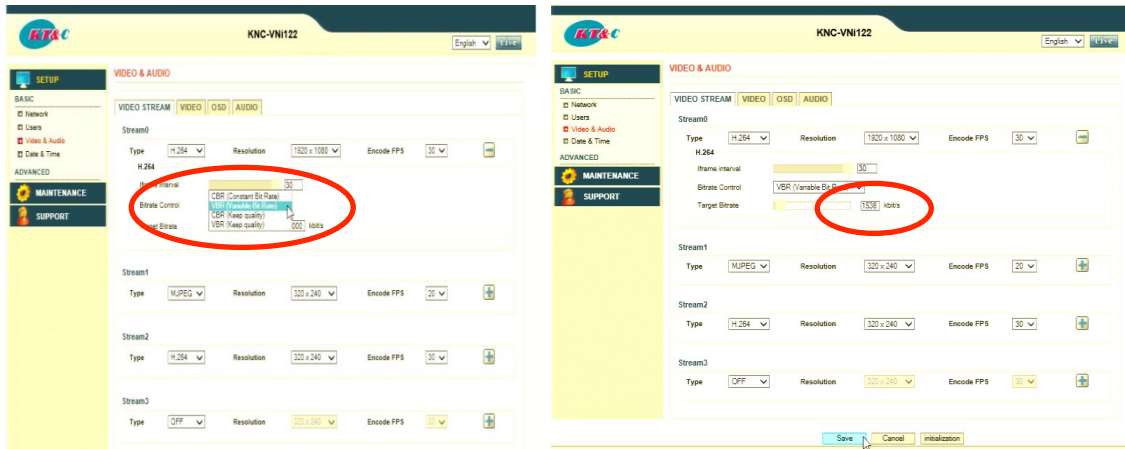
- Launch IP Utility (NetCam IP Installer) and find IP camera
- Change cameras IP address to PC's address so you can access the cameras web interface
- Use Internet Explorer to login into cameras interface (admin/admin)
- Click on the SETUP button in the top right hand corner to access the cameras OSD menu



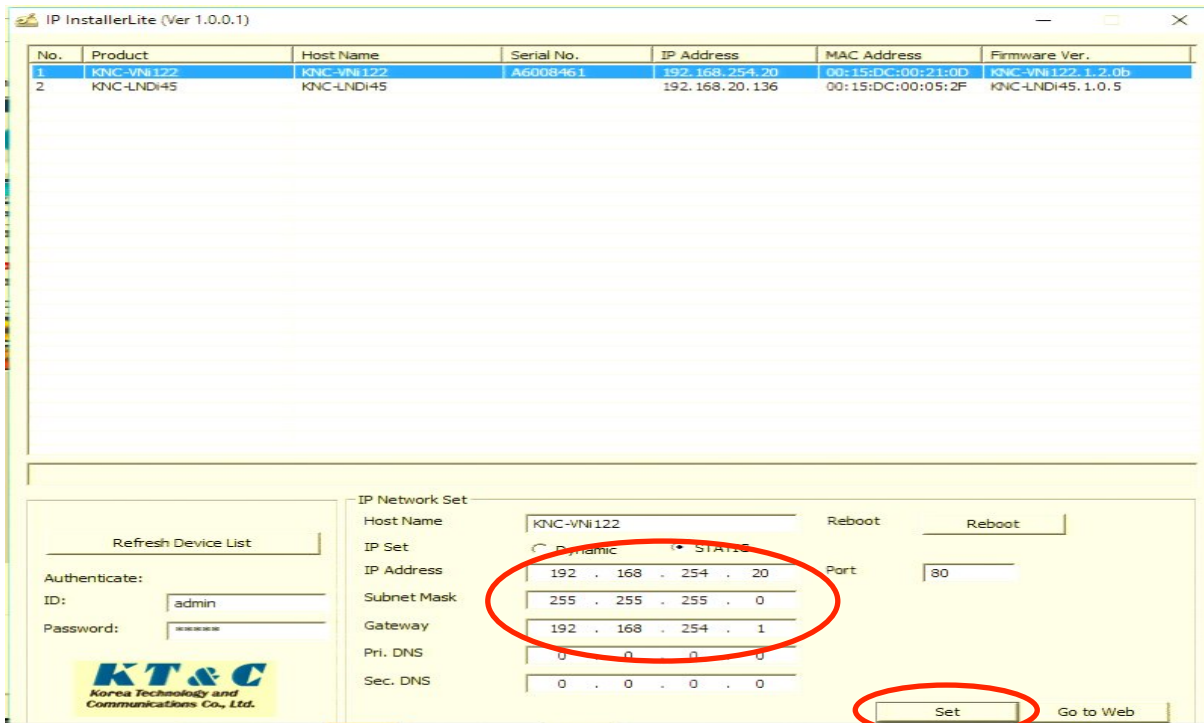
- Choose Video & Audio



- Hit the plus sign (+) next to Stream 0 and change the Bitrate to “VBR (Variable Bitrate)”



- Then change the “kbit/s” field from 4000 to 1536
- Then hit SAVE to save all settings
- Change the cameras IP address back to NIC of the NVR (192.168.254.x) and hit SET to save



- Connect camera to NVR PoE port
- Go to Camera Management of NVR (Menu/Configuration/Camera)
- Hit the EDIT pad of the channel you connected camera and change the following
 - Adding Method to MANUAL
 - IP address to static IP you assigned camera
 - Protocol to ONVIF
 - Management port to 8000
 - Password of camera (admin)
- Camera will connect and new static bitrate will hold in place
- Check settings in Parameters Menu (Menu/Record/Parameters)

Record

- ☰ Schedule
- ⊙ Parameters >
- ⚙ Advanced
- 📅 Holiday

Record

Substream

Camera	[D1] IPCamera 01	
Encoding Parameters	Main Stream(Continuous)	Main Stream(Event)
Stream Type	Video & Audio	Video & Audio
Resolution	1920*1080(1080P)	1920*1080(1080P)
Bitrate Type	Variable	Variable
Video Quality	Lower	Lower
Frame Rate	30fps	30fps
Max. Bitrate Mode	General	General
Max. Bitrate(Kbps)	1536	1536
Max. Bitrate Range Reco...	1536~2560(Kbps)	1536~2560(Kbps)

Enable H.264+

More Setting...

↑ Live View

Copy

Apply

Back